

# Timber Tec

## Chipper Knives

KANEFUSA



*Kanefusa - A New Dimension of Performance*



JQA-QM3710

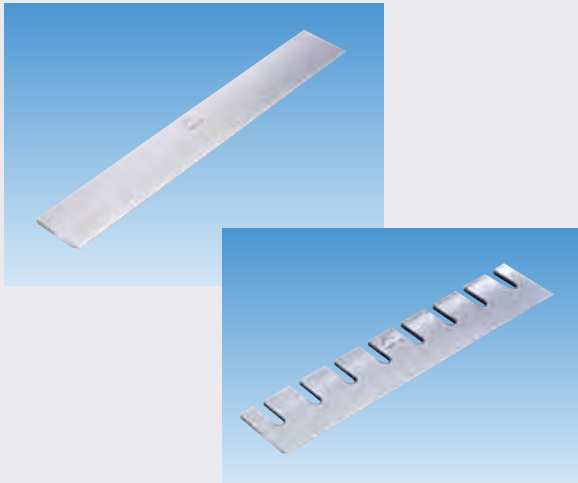


JQA-EM3137  
Head Office  
Factory

Specifications and appearance are subject to change without notice.  
Photographs and illustrations may vary from actual products.

**0-42-3**  
[Class] [Article] [Revision]

# Your Advantage



## Features for Reliable Performance

TimberTec Chipper Knives are made from a new grade of special alloy steel which is not only very tough but also hard enough to outlast conventional steel by more than double.

The included angle may vary between 26° and 40° according to the machine and condition of the timber.

In addition to knives, we also deliver counter-knives, pressure bars, lapping stones and other accessories.

The knives are manufactured per drawing or according to a sample.



## Efficiency Study at a User in South East Asia

No.	Timber Tec Chipper Knife		Conventional Chipper Knife	
	Run time [hour]	Chip production [ton]	Run time [hour]	Chip production [ton]
1	1:14	378.55	0:46	179.45
2	1:58	445.18	0:38	116.79
3	1:57	469.64	0:44	152.95
4	2:05	583.05	0:42	144.05
5	1:51	538.54	0:47	171.38
6	0:54	251.87	0:36	136.88
7	2:46	657.33	0:52	196.07
8	1:49	474.88	0:43	156.80

## User Value

- TimberTec Chipper Knives outlast conventional knives by more than double
- More machine uptime due to less time spent changing knives
- Less grinding cost due to fewer regrinds
- Consistent high chip quality for better yield and better pulp
- Stable performance guarantees high processing reliability

