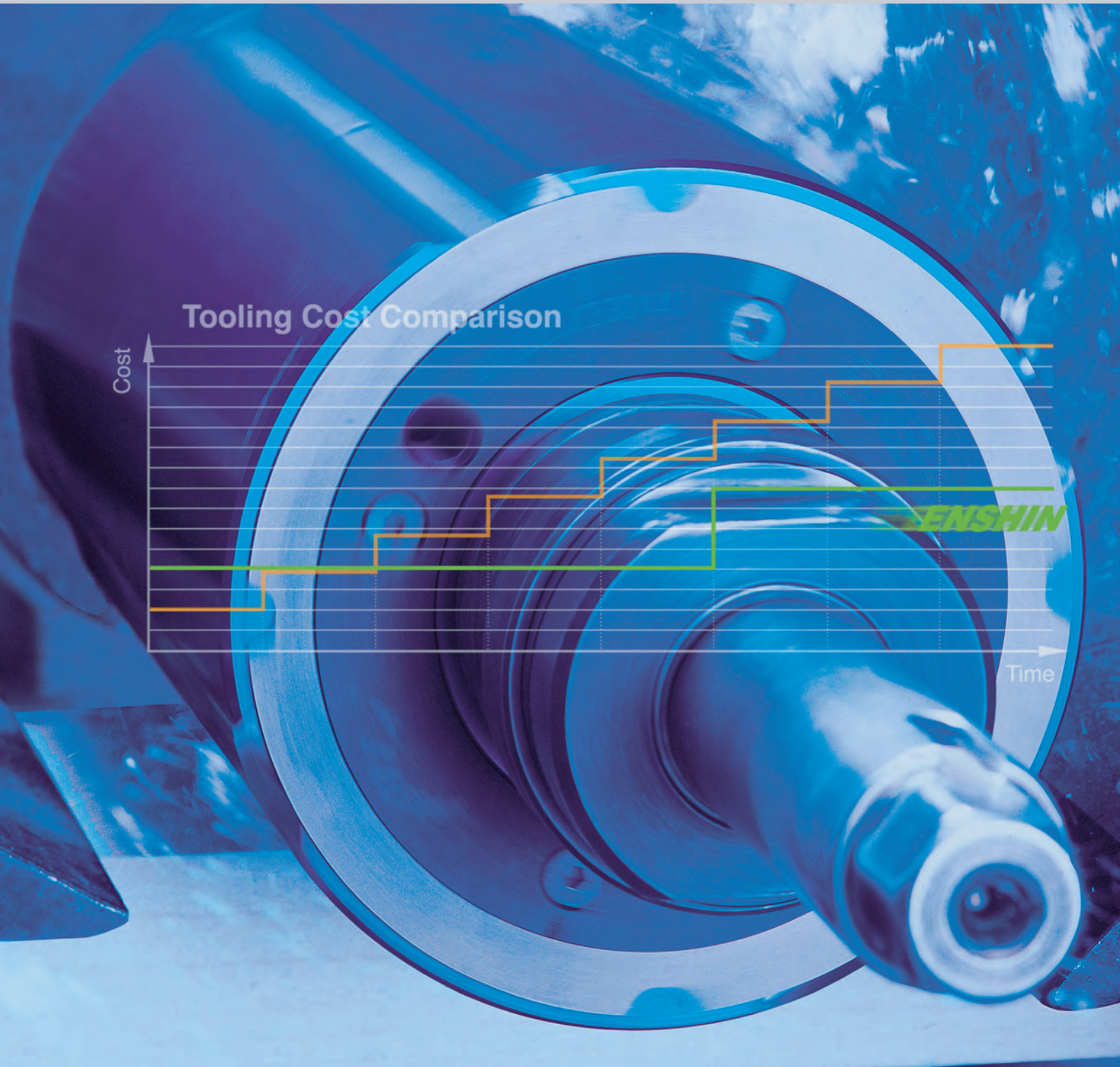


ENSHIN Planer Head

KANEFUSA

PowerLock and Bore-Type



Kanefusa - A New Dimension of Performance



JQA-QM3710

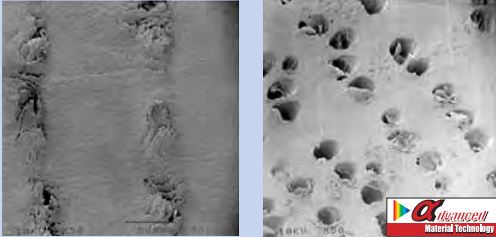


JQA-EM3137
Head Office
Factory

Specifications and appearance are subject to change without notice.
Photographs and illustrations may vary from actual products.

0-27E-9
[Class] [Article] [Revision]

Technology



Advanced Material Technology treated cutting edges stay sharper longer.

The pictures above show the pores of oak after a cutting path of 100m. The HSS cutting edge is already a little blunt and instead of cutting the pores cleanly, it compresses the fibers.

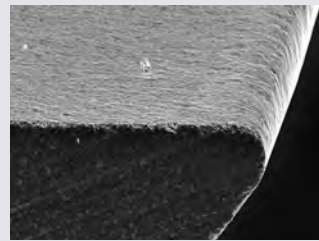
Advanced Material Technology still cuts the pores cleanly, also when cutting against the grain.

An uncoated edge wears out quickly. The blunt cutting edge tears out the grain and does not give a satisfactory cut finish.

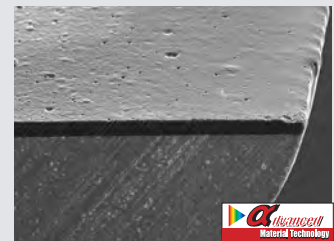


Advanced Material Technology is an implantation into a substrate material. In case of planer knives it is applied to the rake face of a HSS substrate.

Advanced Material Technology treated cutting edges stay very sharp for a very long time. Only little traces of wear in form of a chamfer on the back and small rounding on the face appear during the time of use.



HSS cutting edge after cutting 1000m of Spruce



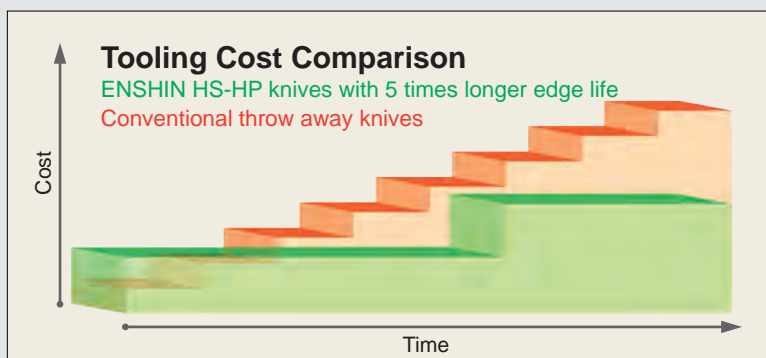
HS-HP cutting edge after cutting 1000m of Spruce

Knives for More User Value

Every knife has two cutting edges in reversible design, which makes the ENSHIN a very economical tooling solution.

Knife quality HS-HP is high speed steel treated with Advanced Material Technology. Advanced Material Technology provides up to 5 times longer edge life compared with regular HSS knives when planing softwoods.

For planing of hard and tropical timber, carbide knives (HW) provide excellent lifetimes in correlation with finest surfaces.



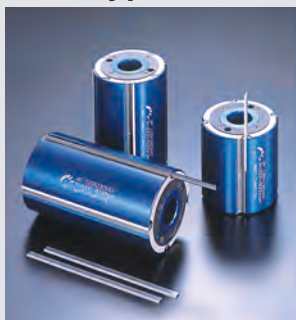
Every knife has a chip breaker for finest surfaces even when cutting against the grain direction.

Every cutting edge is finely lapped, which ensures perfect cutting results even when planing twisted grained timber.

HS-HP knives are for single use. No edge life loss after grinding, no inconsistent cut quality but high process stability and trouble free working.

Sizes

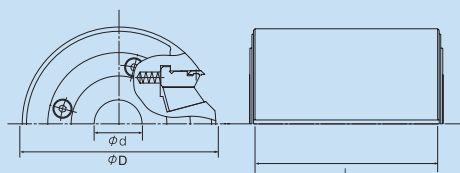
Bore Type Heads



For up to 8000 RPM it is also possible to mount a regular bore type ENSHIN onto an arbor with PowerLock interface.

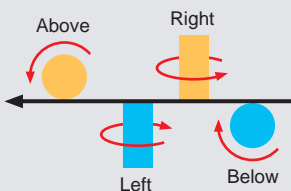
After secure assembly of the arbor and the ENSHIN, the entire system is balanced in order to ensure highest planing quality and work safety.

Regular arbors and hydro arbors are available. For more details please contact Kanefusa.



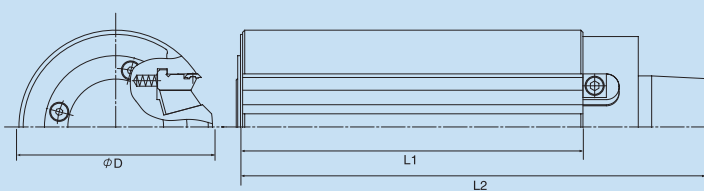
Code No.	(D)	(L)	Size (d)	(Z)	N max
1 789-B375-500	125	100	40	4	8000
2 789-A869-500	125	130	40	4	8000
3 789-B078-500	125	150	40	4	8000
4 789-A868-500	125	180	40	4	8000
5 789-A866-500	125	230	40	4	8000
6 789-B630-500	125	100	1 1/2"	4	8000
7 789-B638-500	125	130	1 1/2"	4	8000
8 789-B637-500	125	150	1 1/2"	4	8000
9 789-B636-500	125	230	1 1/2"	4	8000

PowerLock Heads



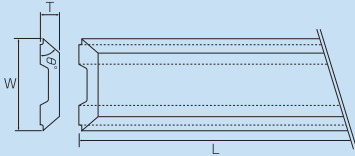
The body diameter (BD) of the PowerLock ENSHIN is 90mm. The mono-block body is pre-manufactured by Weing S.A. of Switzerland and completed by Kanefusa Corporation Japan. This ensures the highest standard in precision and quality.

Equipped with HS-HP knives, the outer tool diameter will be 92mm. Because HW knives are wider, the outer tool diameter will be 92.7mm. Either diameter fits Powermat machines.



Code No.	(D)	Size (L1)	(L2)	(Z)	Type
1 788-1213-500	90	80	138	2	Left/Below
2 788-1255-500	90	100	158	2	Left/Below
3 788-1073-500	90	130	188	2	Left/Below
4 788-1297-500	90	150	208	2	Left/Below
5 788-1114-500	90	170	228	2	Left/Below
6 788-1338-500	90	190	248	2	Below
7 788-1370-500	90	210	268	2	Below
8 788-1156-500	90	240	298	2	Below
9 788-1239-500	90	80	138	2	Right/Above
10 788-1271-500	90	100	158	2	Right/Above
11 788-1081-500	90	130	188	2	Right/Above
12 788-1312-500	90	150	208	2	Right/Above
13 788-1122-500	90	170	228	2	Right/Above
14 788-1396-500	90	210	268	2	Above
15 788-1164-500	90	240	298	2	Above

Knives



Grade Specifications

HS-HP : High Speed Steel with
Advanced Material
Technology treatment

HW : Solid Carbide

	Code No.	Size			Grade
		(L)	(W)	(T)	
1	797-A483-611	80	12	2.6	HS-HP
2	797-1022-611	100	12	2.6	HS-HP
3	797-1329-611	130	12	2.6	HS-HP
4	797-1527-611	150	12	2.6	HS-HP
5	797-1725-611	170	12	2.6	HS-HP
6	797-1824-611	180	12	2.6	HS-HP
7	797-1923-611	190	12	2.6	HS-HP
8	797-2129-611	210	12	2.6	HS-HP
9	797-2327-611	230	12	2.6	HS-HP
10	797-2434-611	240	12	2.6	HS-HP
11	797-A423-900	80	12.7	2.6	HW
12	797-A452-900	100	12.7	2.6	HW
13	797-A435-900	130	12.7	2.6	HW
14	797-A443-900	150	12.7	2.6	HW
15	797-A528-900	170	12.7	2.6	HW
16	797-A436-900	180	12.7	2.6	HW
17	797-A470-900	190	12.7	2.6	HW
18	797-A505-900	210	12.7	2.6	HW
19	797-A351-900	230	12.7	2.6	HW
20	797-A481-900	240	12.7	2.6	HW

Knives for Tersa® – System Planer Heads



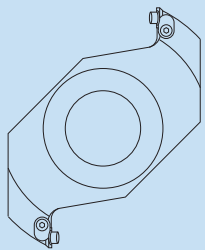
	Code No.	Size			Grade
		(L)	(W)	(T)	
1	797-A516-611	130	10	2.3	HS-HP
2	797-A518-611	180	10	2.3	HS-HP
3	797-A517-611	230	10	2.3	HS-HP
4	797-7955-611	650	10	2.3	HS-HP

※Other lengths are available upon request.

Tersa® is a registered trademark of Samvaz S.A.

Kanefusa Corporation makes no claim of ownership to this trademark

Rebating Reference Engraver Head



In combination with
ENSHIN bore type
heads

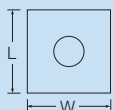
	Code No.	Size			
		(OD)	(L)	(d)	(Z)
1	877-C055-400	140	12	40	2
2	877-0000-400	140	12	1 1/2"	2

Replacement Knives

781-1210-901 12 x 12 x 1.5 four (4) sided solid carbide knife
with Advanced Material Technology treatment.

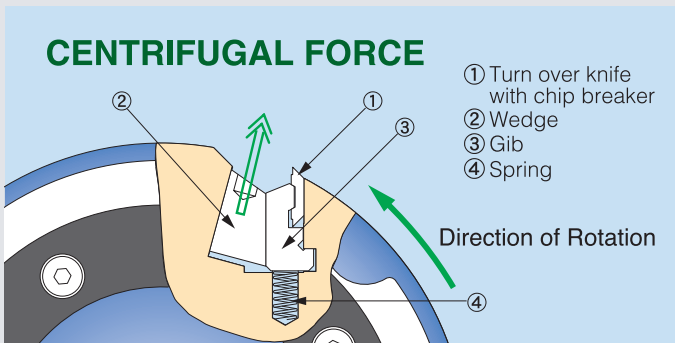
※Other specifications are available upon request.

Knives for Reference Engraver



	Code No.	Size			Grade
		(L)	(W)	(T)	
1	781-1210-901	12	12	2	HC-UP

Body for More User Value



Unique and easy to handle centrifugal self-locking system accurately locks the knives in place.

Run out less than 0.04 mm. Surface finish is superior especially when used in conjunction with PowerLock-System.



PowerLock ENSHIN is a mono-block tooling in steel for highest rigidity, excellent runout, longest use life and tested for RPM of up to 12500min⁻¹.

Bore-type ENSHIN is made of Aluminum for light weight, but with high durability and longest use life.

Closed round shaped body ensures a quiet work environment.



Tap the wedge gently

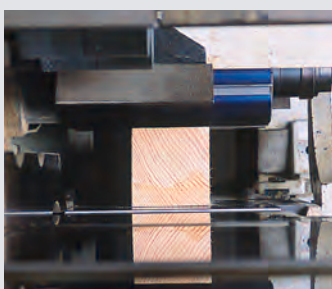


Turn the safety stopper ring



Slide out the knife

Application



N (rpm)	Z	S.R. (mm)	F (mm)								
			1	5	10	15	20	25	30	35	
6000	2	0.5	Orange	Green	Yellow	Yellow	Yellow	Yellow	Yellow	Yellow	Yellow
		1	Orange	Green	Yellow	Yellow	Yellow	Yellow	Yellow	Yellow	Yellow
		1.5	Orange	Green	Yellow	Yellow	Yellow	Yellow	Yellow	Yellow	Yellow
		2	Orange	Green	Yellow	Yellow	Yellow	Yellow	Yellow	Yellow	Yellow
		2.5	Orange	Green	Yellow	Yellow	Yellow	Yellow	Yellow	Yellow	Yellow
	4	3	Orange	Green	Yellow	Yellow	Yellow	Yellow	Yellow	Yellow	Yellow
		3.5	Orange	Green	Yellow	Yellow	Yellow	Yellow	Yellow	Yellow	Yellow
		4	Orange	Green	Yellow	Yellow	Yellow	Yellow	Yellow	Yellow	Yellow
		4.5	Orange	Green	Yellow	Yellow	Yellow	Yellow	Yellow	Yellow	Yellow
		5	Orange	Green	Yellow	Yellow	Yellow	Yellow	Yellow	Yellow	Yellow

N (rpm)	Z	S.R. (mm)	F (mm)							
			1	5	10	15	20	25	30	35
8000	2	0.5	Orange	Green	Yellow	Yellow	Yellow	Yellow	Yellow	Yellow
		1	Orange	Green	Yellow	Yellow	Yellow	Yellow	Yellow	Yellow
		1.5	Orange	Green	Yellow	Yellow	Yellow	Yellow	Yellow	Yellow
		2	Orange	Green	Yellow	Yellow	Yellow	Yellow	Yellow	Yellow
		2.5	Orange	Green	Yellow	Yellow	Yellow	Yellow	Yellow	Yellow
	4	3	Orange	Green	Yellow	Yellow	Yellow	Yellow	Yellow	Yellow
		3.5	Orange	Green	Yellow	Yellow	Yellow	Yellow	Yellow	Yellow
		4	Orange	Green	Yellow	Yellow	Yellow	Yellow	Yellow	Yellow
		4.5	Orange	Green	Yellow	Yellow	Yellow	Yellow	Yellow	Yellow
		5	Orange	Green	Yellow	Yellow	Yellow	Yellow	Yellow	Yellow
12000	2	0.5	Orange	Green	Yellow	Yellow	Yellow	Yellow	Yellow	Yellow
		1	Orange	Green	Yellow	Yellow	Yellow	Yellow	Yellow	Yellow
		1.5	Orange	Green	Yellow	Yellow	Yellow	Yellow	Yellow	Yellow
		2	Orange	Green	Yellow	Yellow	Yellow	Yellow	Yellow	Yellow
		2.5	Orange	Green	Yellow	Yellow	Yellow	Yellow	Yellow	Yellow
	4	3	Orange	Green	Yellow	Yellow	Yellow	Yellow	Yellow	Yellow
		3.5	Orange	Green	Yellow	Yellow	Yellow	Yellow	Yellow	Yellow
		4	Orange	Green	Yellow	Yellow	Yellow	Yellow	Yellow	Yellow
		4.5	Orange	Green	Yellow	Yellow	Yellow	Yellow	Yellow	Yellow
		5	Orange	Green	Yellow	Yellow	Yellow	Yellow	Yellow	Yellow

Orange Ultra fine planing Green Fine planing Yellow Rough planing

Knife Grade	Material	Regrinding
HS-HP	Softwoods	Can not be reground
HW	Hardwood, Tropical wood	0.7 mm at the back side (grinding fixture available)

Due to the knife features, all heads are suitable to cut hardwoods as well as softwoods. Different hook angles for different materials are not required.



<http://www.kanefusa.net>

KANEFUSA CORPORATION

Head Office / Factory

1-1 Nakaoguchi, Ohguchi-cho, Niwa-Gun
Aichi-ken, Japan, Postal Code 480-0192
Tel : +81 587 95 7221 Fax : +81 587 95 7226
E-mail: sales-ex@kanefusa.co.jp

PT. KANEFUSA INDONESIA

EJIP Industrial Park, Plot 8D, Cikarang Selatan,
Bekasi 17550, West Java, Indonesia
Tel : +62 21 897 0360 Fax: +62 21 897 0286
+62 21 897 0287
E-mail : sales@kanefusa.co.id

Surabaya Service Center

JL. Berbek Industri VII/5B Kawasan Industri Sier Surabaya, Indonesia
Tel : +62 31 849 1784 Fax: +62 31 849 2784

KANEFUSA EUROPE B.V.

De Witbogt 12, 5652 AG, Eindhoven, The Netherlands
Tel : +31 40 290 0901 Fax: +31 40 290 0908
E-mail : info@kanefusa.nl

Moscow Office

Vozdvizhenka 10, 125009, Moscow, Russia
Tel : +7 495 797 3759

KANEFUSA USA, INC.

621 Dolwick Drive, Erlanger, KY 41018, USA
Tel : +1 859 283 1450 Fax: +1 859 283 5256
E-mail : sales@kanefusa-na.com

Atlanta Office

3675 Crestwood Pkwy, Ste 400, Duluth, GA 30096, U.S.A
Tel : +1 770 817 7593

KANEFUSA CHINA CORPORATION

NO.50 Zhuzhu Road, Lujia Town Kunshan city, Jiangsu, China
Tel : +86 512 57875072 Fax: +86 512 57875073
E-mail : yy@kanefusa-cn.com

Tianjin Office

Sanjinglu No.5 Dongli economic development zone Tianjin city CHINA
Tel : +86 22 5823 7633 Fax: +86 22 5823 7632
E-mail : tjkc03@kanefusa-cn.com

Guangdong Office

No.2 Danhen Road, Danzao Town Foshan City, Guangdong, China
Tel : +81(0)75785406562 Fax: +81(0)75785406571
E-mail : fssales@kanefusa-cn.com

KANEFUSA INDIA PRIVATE LIMITED

Plot No.232, Sector-8, IMT Manesar, Gurgaon,
Haryana PIN 122-050 India
Tel : +91 124 420 8440 Fax: +91 124 420 8441
E-mail : info@kanefusa.co.in

Pune Service Center

Meera Plaza, Opposite Hindustan Unilever, Survey No.145-188,
near Ganeshnagar Industrial Area, Pune-Saswad Road,
Phursungi, Pune 412308
Tel : +91 20 65600289

KANEFUSA DO BRASIL LTDA.

Rua Bom Pastor, 2732 Bloco Torre Sul - Sala 73
São Paulo - SP Cep:04203-003
Tel : +55 11 2372 7664 Fax: +55 11 2372 7663
E-mail : vendas@kanefusa.net.br

Joinville Service Center

Rua Helmuth Fallgatter 1937, Joinville-SC CEP: 89206-101, Brasil
Tel : +55 47 3439 5486

KANEFUSA MEXICO S.A. DE C.V.

Circuito Logistic Aeropuerto No.4 Fracc.1 Lote2 Predio San
Antonio Texas Silao Guanajuato C.P. 36273 Mexico
Tel : +52 1 472 7486314/3 Fax: +52 1 472 7486313
E-mail : info@kanefusa.com.mx

KANEFUSA VIETNAM CO., LTD.

Road No.N3-2, Long Duc IP, Long Duc Ward,
Long Thanh District, Dong Nai Province, Vietnam
Tel : +84 61 368 1400 Fax: +84 61 368 1402
E-mail : sales@kanefusa-vn.com