

# Board Pro **NEO**

KANEFUSA

Table Sawblade



Save money: use Board Pro **NEO**

*Kanefusa - A New Dimension of Performance*



JQA-QM3710



JQA-EM3137  
Head Office  
Factory

Specifications and appearance are subject to change without notice.  
Photographs and illustrations may vary from actual products.

**0-53E-4**

[Class] [Article] [Revision]

# Board Pro **NEO**

A Table sawblade for cutting particle board and MDF, backed with melamine, HPL and other hard lamination.

## Quality Features for More User Value

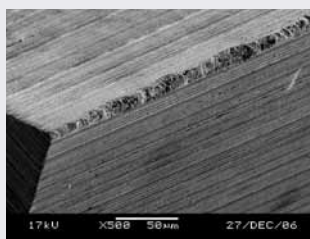
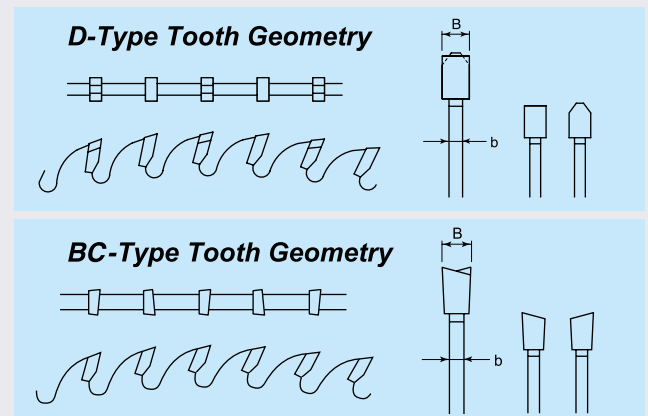
### 1 Run out in comparison to other brands. Board Pro *NEO* runs very straight

	Run out left side [mm]	Run out right side [mm]	Edge roughness Ra [ $\mu\text{m}$ ]	Edge roughness Rmax [ $\mu\text{m}$ ]
<b>Board Pro <i>NEO</i></b>	0.05	0.04	0.083	0.718
Competitor A (German manufacturer)	0.08	0.08	0.170	1.799
Competitor B (German manufacturer)	0.07	0.08	0.306	4.417
Competitor C (German manufacturer)	0.11	0.11	0.197	2.152

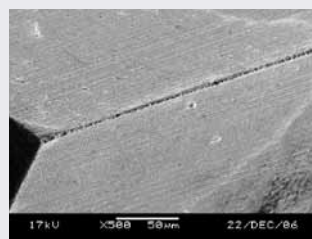
2 Polymer injected laser slits dampen vibrations. Board Pro *NEO* sawblades **cut straighter** and **run quieter** than most other makes.

3 The Board Pro *NEO* sawblade is tipped with a newly developed Tungsten Carbide grade. Field tests in various countries have proved its **superior performance** in comparison to other brands. On average, its life was double of others.

4 Compared with other sawblades, the cutting edge of Board Pro *NEO* is of superior sharpness, leading to **better cut quality** and **longer life**.



Other maker



Kanefusa

D	B	b	d	z	Type	Pin holes
250	3.2	2.2	30	80	D	
300	3.2	2.2	30	72	D	
300	3.2	2.2	30	96	D	2/7/42+2/9/46.5+2/10/60
300	3.2	2.2	25.4	96	D	
250	3.2	2.2	30	80	BC	
300	3.2	2.2	30	96	BC	2/7/42+2/9/46.5+2/10/60